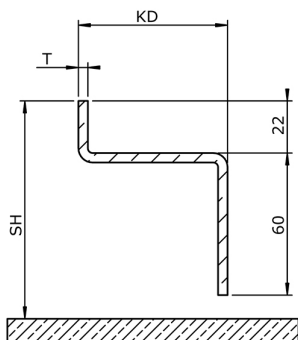
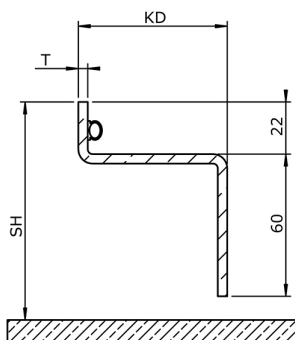


SILL TYPES. A DOORS

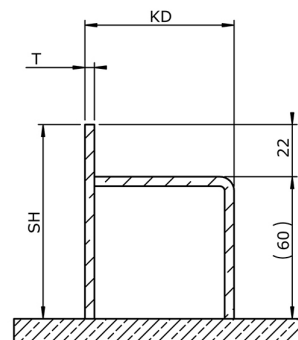
KD = Frame Depth
T = Material Thickness



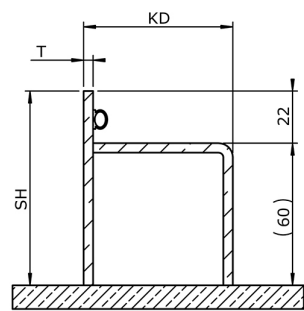
Sill Type: S1



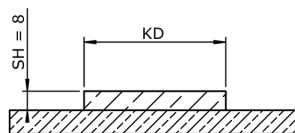
Sill Type: S2
For Gas- & Weathertight doors



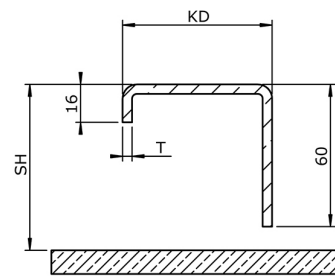
Sill Type: S3
SH STD: 82 mm
SH MIN: 42 mm



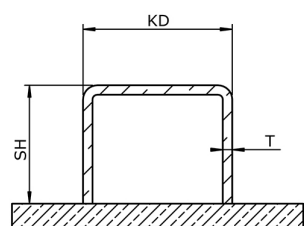
Sill Type: S4
SH STD: 82 mm
SH MIN: 42 mm
For Gas- & Weathertight doors



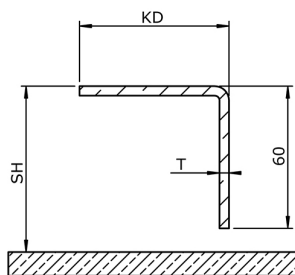
Sill Type: S5
Door MV4298: KD 45 mm
Door MV4360: KD 60 mm
Door MV4361: KD 60 mm



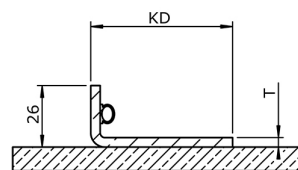
Sill Type: S6



Sill Type: S7
SH STD: 40 mm
SH MIN: 20 mm



Sill Type: S8



Sill Type: S9
For Gas- & Weathertight doors



Door MV4298: KD 49 mm
Door MV4360: T 3 mm



Door MV4360: KD 63 mm
Door MV4360: T 4 mm



Door MV4361: KD 63 mm
Door MV4361: T 4 mm